

***PV-WAVE 8.5***  
***Installation Guide***

## Introduction

PV-WAVE is an array oriented fourth-generation programming language used by engineers, scientists, researchers, business analysts and software developers to build and deploy Visual Data Analysis applications. These applications let users manipulate and visualize complex or extremely large technical datasets to detect and display patterns, trends, anomalies and other vital information.

PV-WAVE is a comprehensive package for obtaining solutions for linear and non-linear equations and has a powerful graphics feature that is capable of graphing complex functions. Most if not all the famous mathematical and statistical functions and equations such as Error Function, Gamma Function, FFT, etc, are programmed in PV-WAVE and are available without much effort.

This manual will guide you through the procedure of installing PV-WAVE on Windows 2000/XP and will help you to get started with PV-WAVE. This tutorial assumes that you have a working knowledge of your computer and Windows Operating System.

## How to get PV-WAVE 8.5?

To get PV-WAVE 8.5, you can either download it through the VNI website. Go to <http://www.vni.com/products/wave/pvwave/download.php> or e-mail [assist@mcsr.olemiss.edu](mailto:assist@mcsr.olemiss.edu) from your university issued e-mail account to get the CD.

## Conventions used in this Manual

**Enter** and **Type** mean type the indicated text at the prompt or into a text input field.

**Choose**, **Select**, and **Click** mean move the pointer to the indicated position and press the left mouse button.

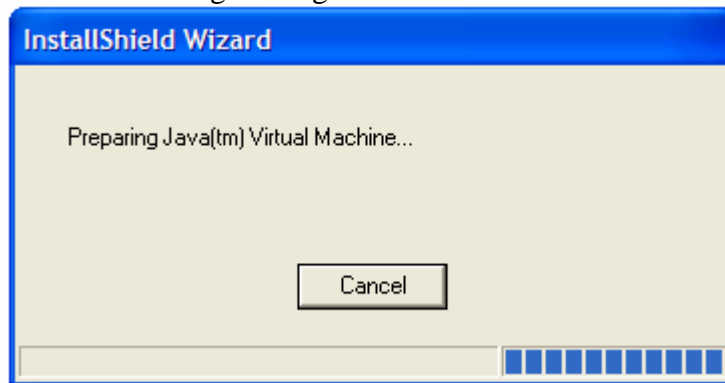
**Pathname** refers to all directories and subdirectories in a path. **Filename** refers to the complete name of the file, including its extension.

# Installation

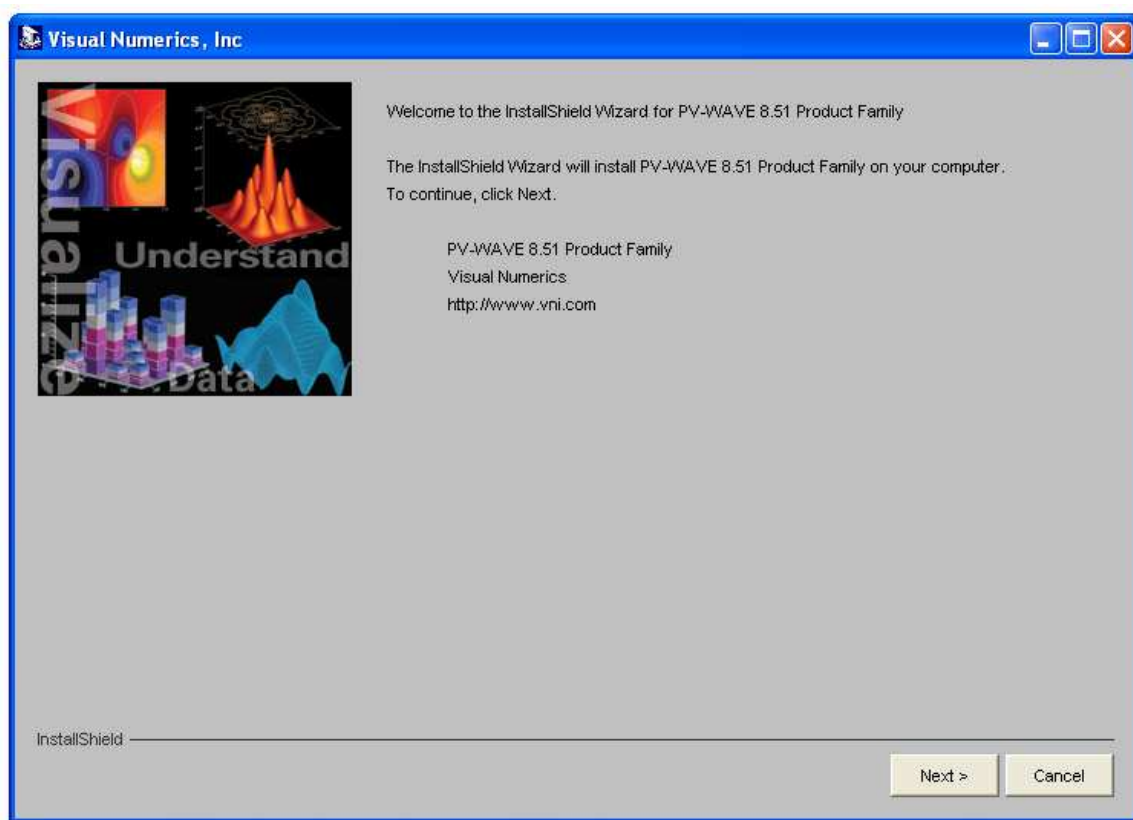
To install PV-WAVE on Windows 2000/XP, do the following:

- Insert the CD into the CD-ROM drive.
- Browse the CD folder

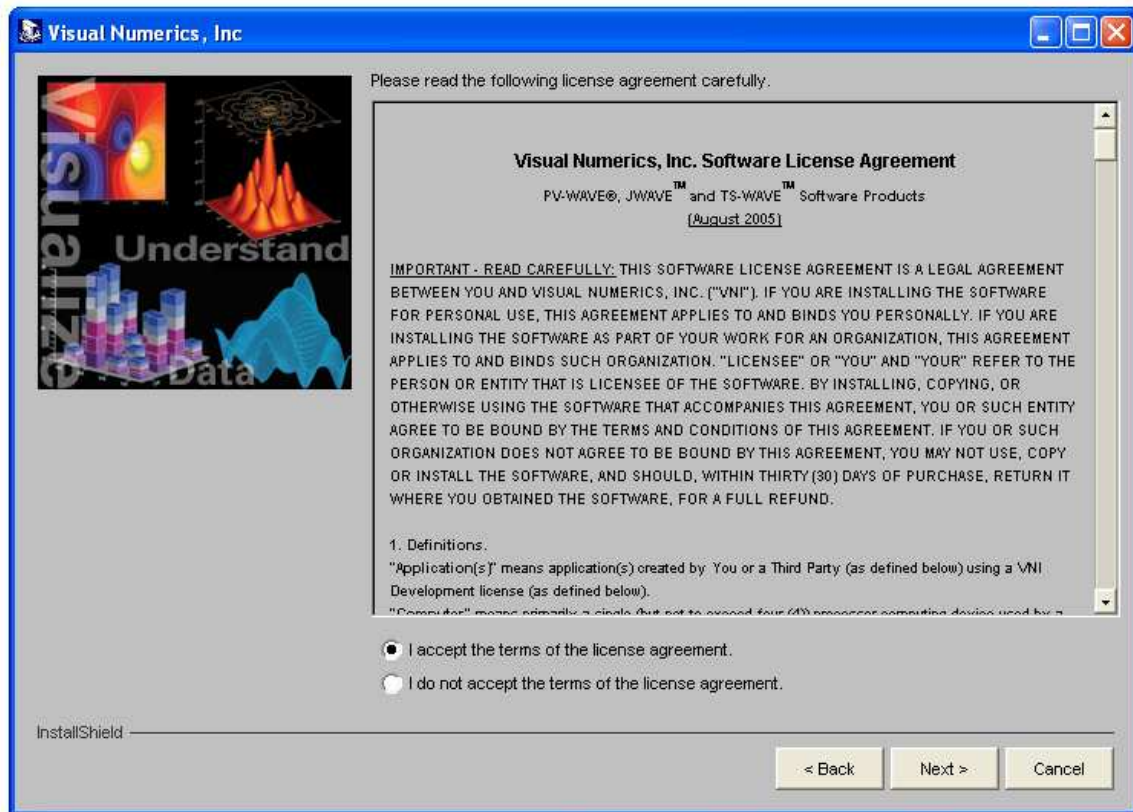
1. Click on the SETUP icon (Filename is SETUP.EXE) and then you should see the following message:



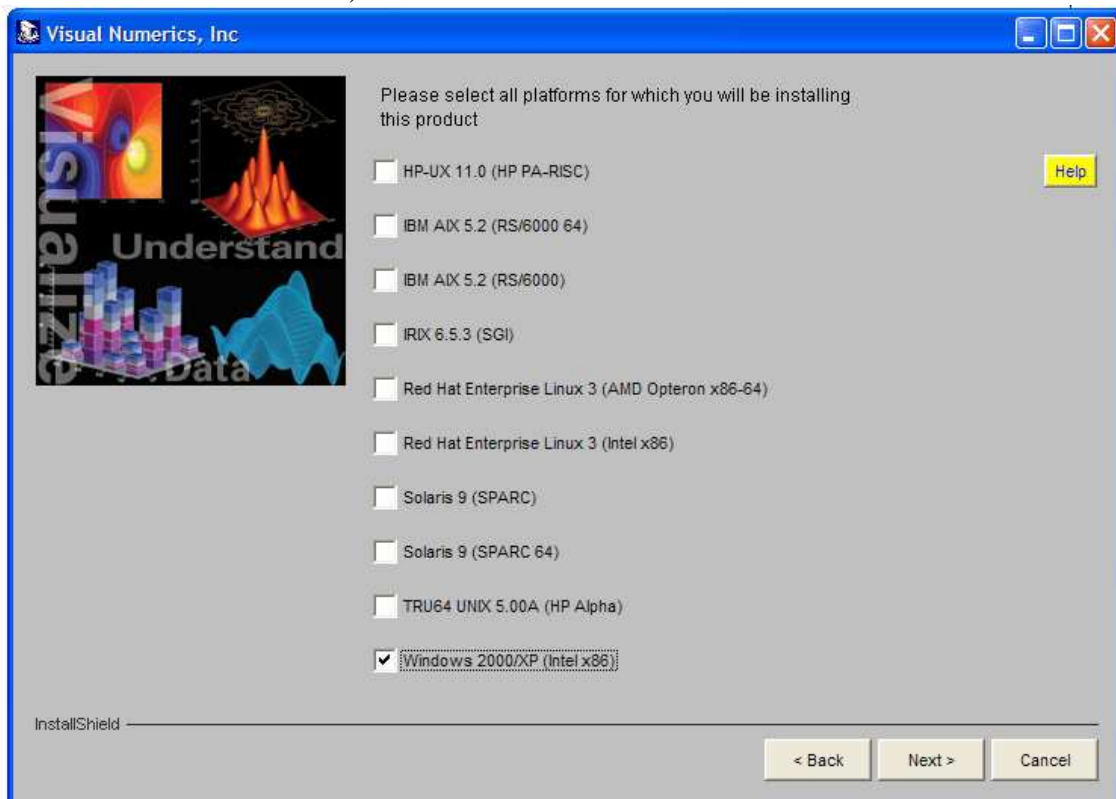
2. This is the welcome screen to the installation wizard. Click on *Next>* to proceed to the next step.



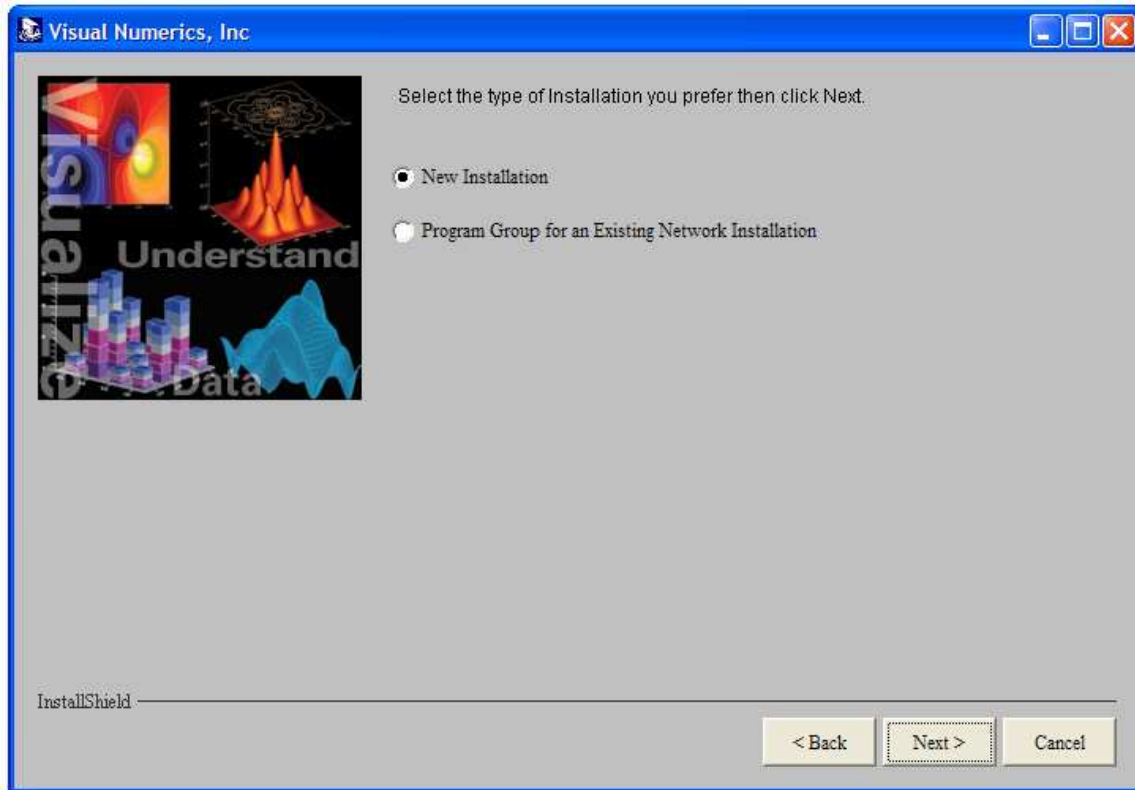
3. This is the End User License Agreement, on which you must choose ***I accept*** and click ***Next>*** to continue installation. However, you are advised to read the terms of the license carefully before proceeding with the installation. If you decline the license terms, the installation cannot proceed.



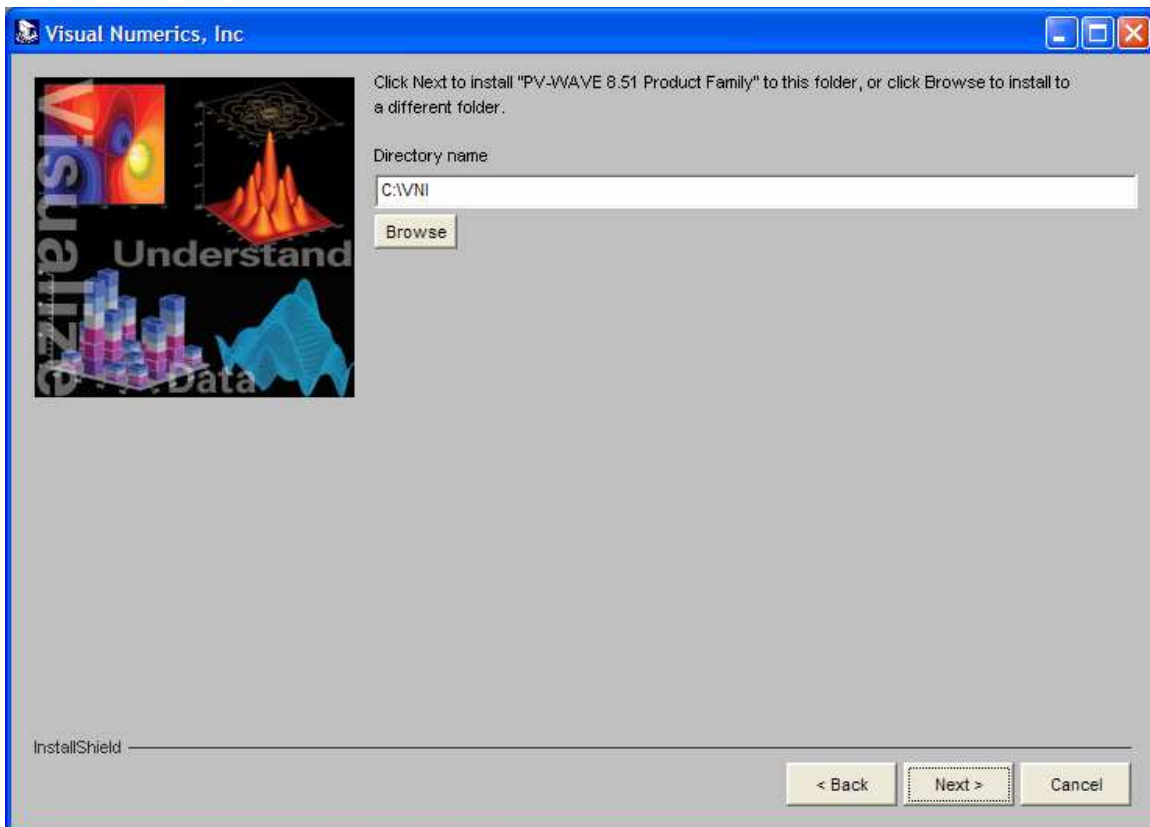
4. Select the platforms for which you will be installing this product (Windows 2000/XP in this case) and then Click on ***Next>***



5. This screen allows you to select the type of installation you prefer. For our case, select the *New Installation* Button and click on *Next>*



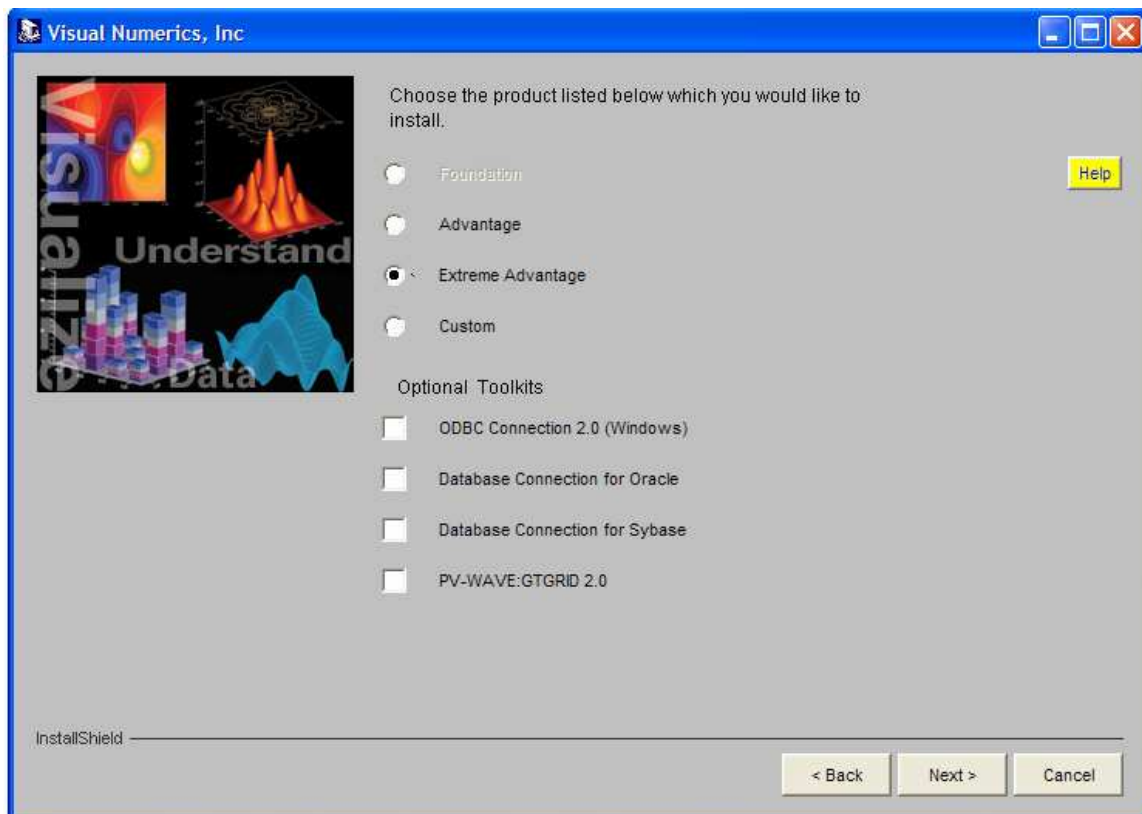
6. You will then be prompted to enter the path where you want to install PV-WAVE. Unless there is a specific need to change the installation path- for instance you want to install PV-WAVE on a different drive- we recommend that the default setting is used. Once you have the correct path, click on *Next>* to proceed.



7. This screen allows you to choose which products of the package to install. Choose the products you want to install and then click on **Next>**

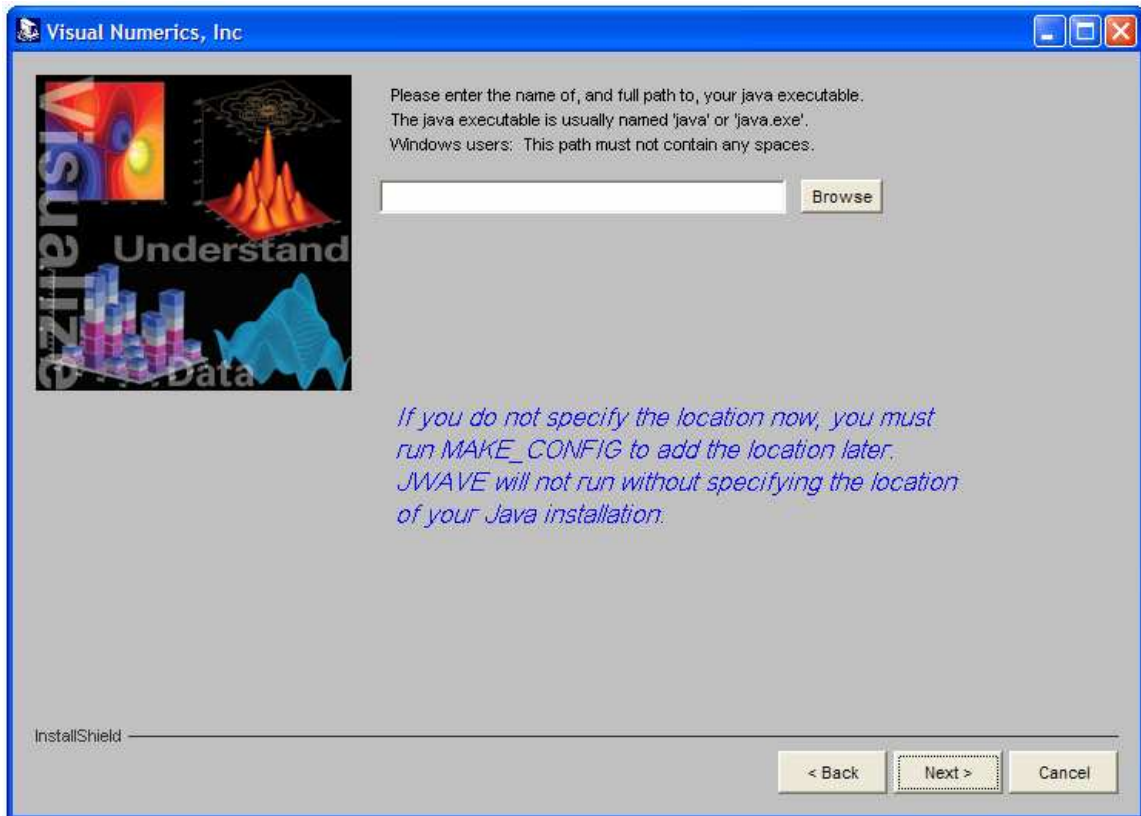


8. This screen allows you to choose which of the products to install. **Custom** gives you some degree of control over what gets installed. Extreme Advantage provides you almost with all the available features. You can also choose from the list of optional Toolkits. Choose the **Extreme Advantage** button and click on **Next>>**

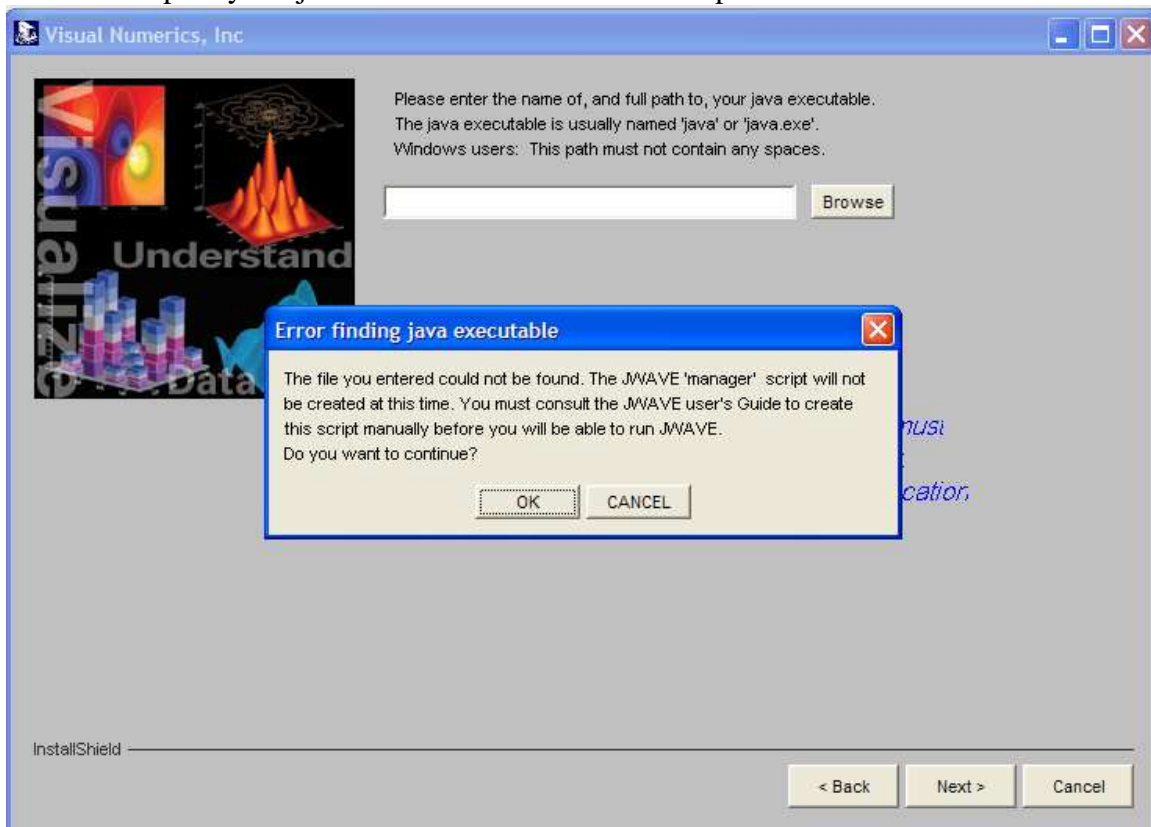




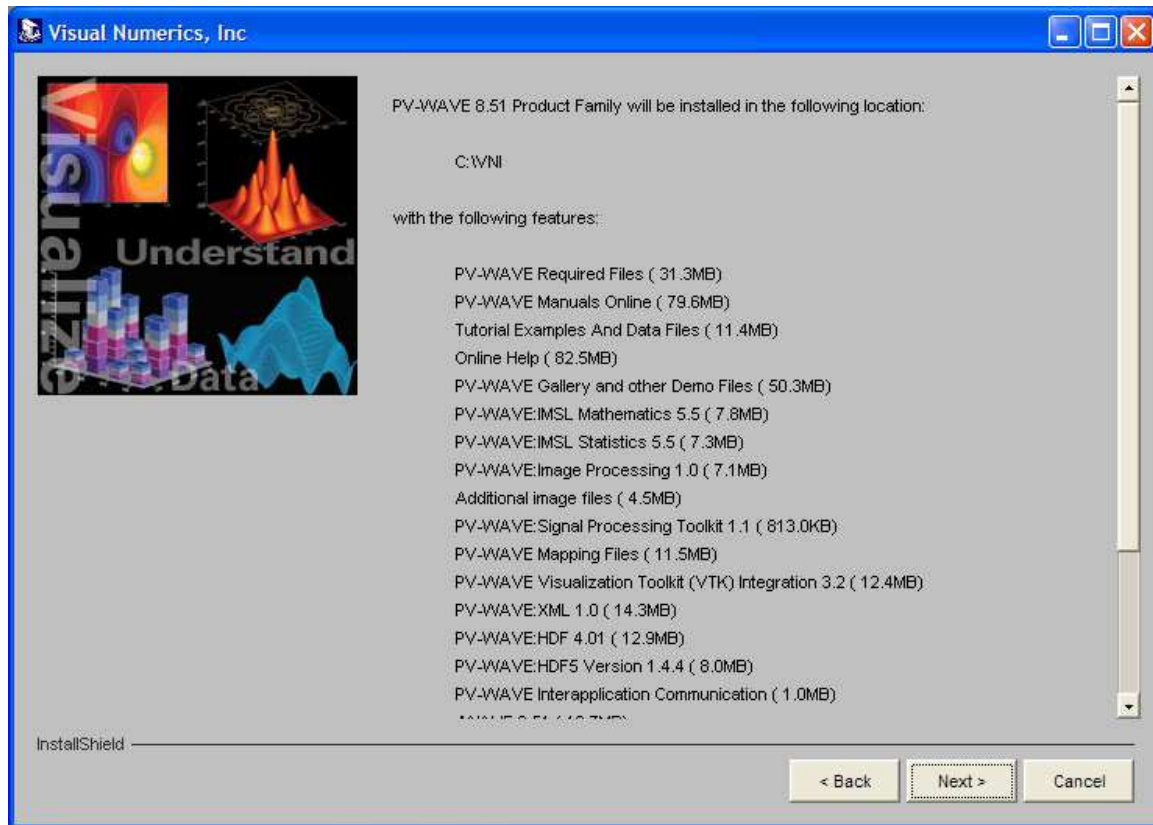
9. If you know the Pathname of your java executable, enter it or specify it with the **Browse** button and click on **Next>>**. If you do not know the path, or you do not need to use the JWAVE, then just click on **Next>>**



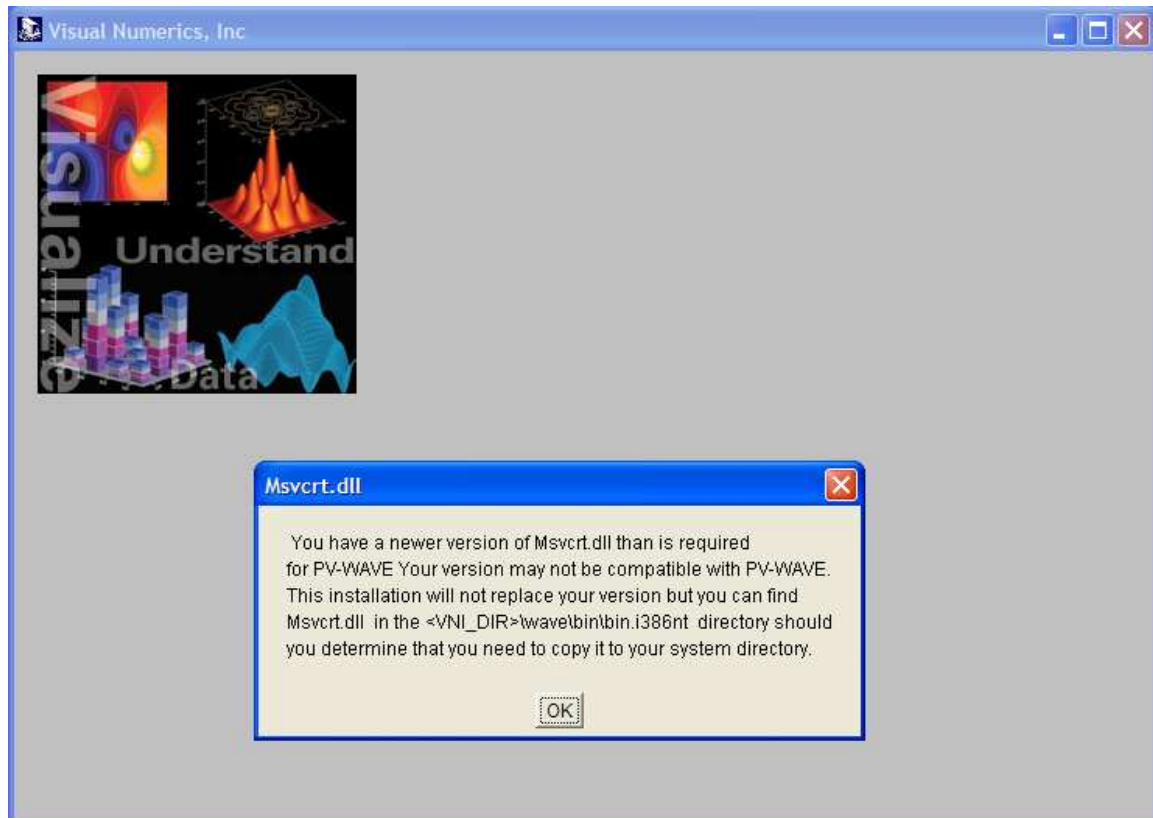
10. If you do not specify the path, this message will appear telling you that you did not specify the java executable. Click on **OK** to proceed.



11. This screen will show you the files that will be installed. Click on *Next>>*

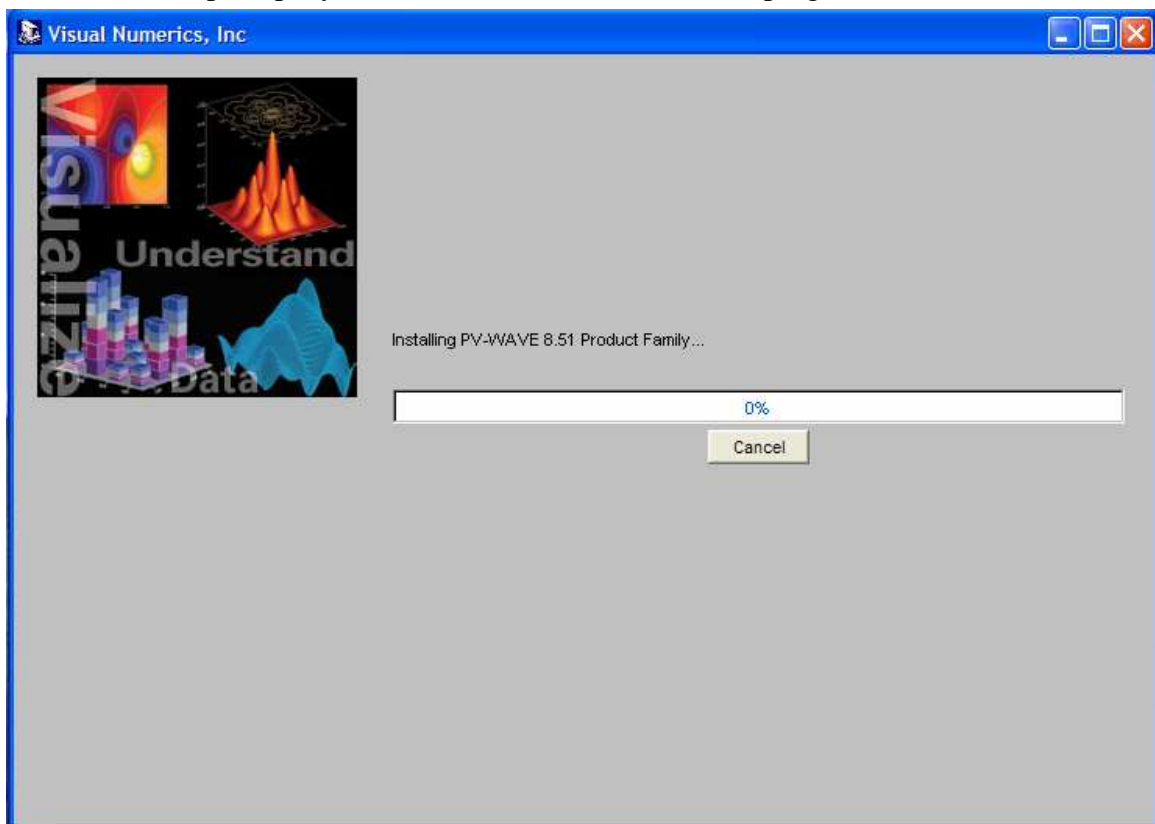


12. You might get messages saying that you have *.dll* files with newer versions than the ones needed. Click on the *OK* button until no more messages appear

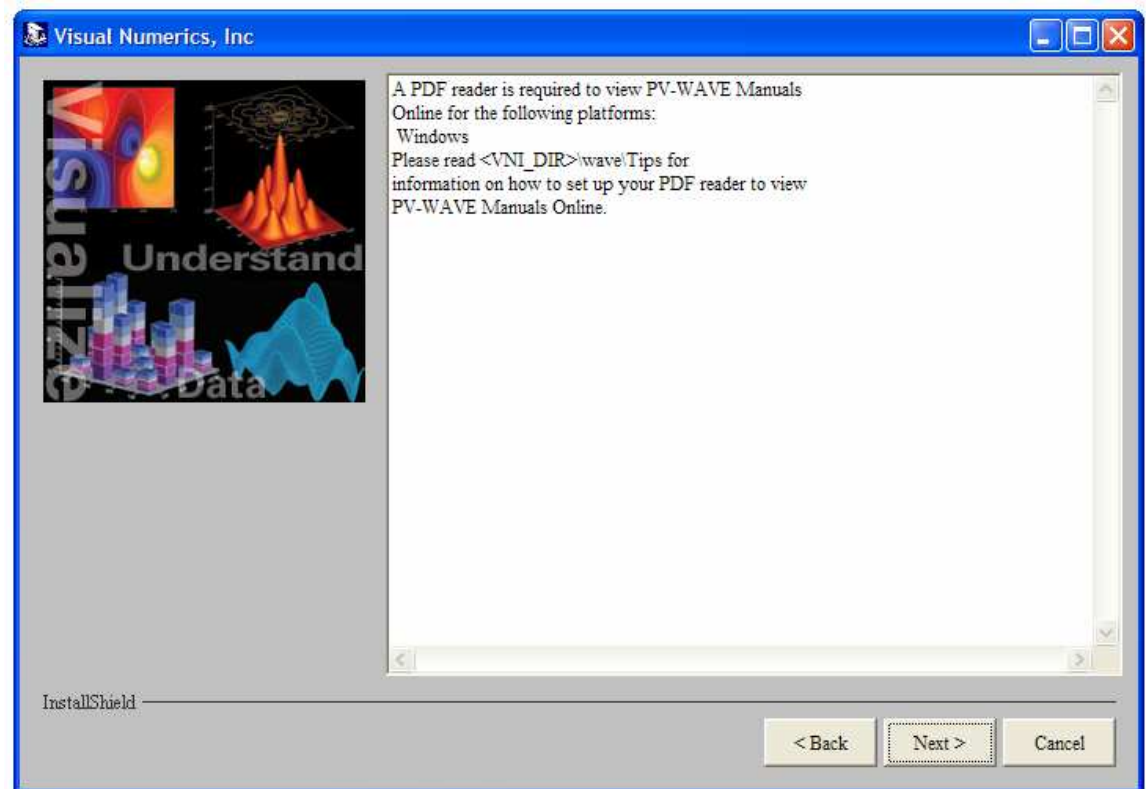




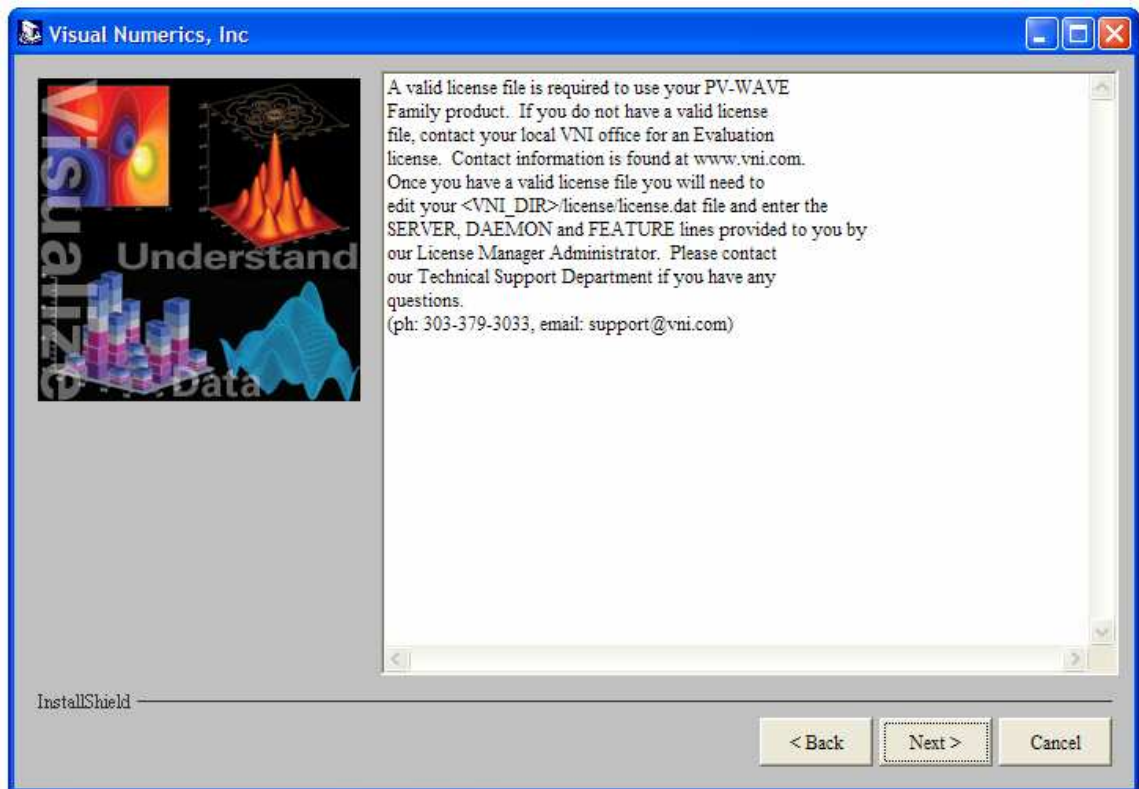
13. This screen prompts you of the PV-WAVE installation progress



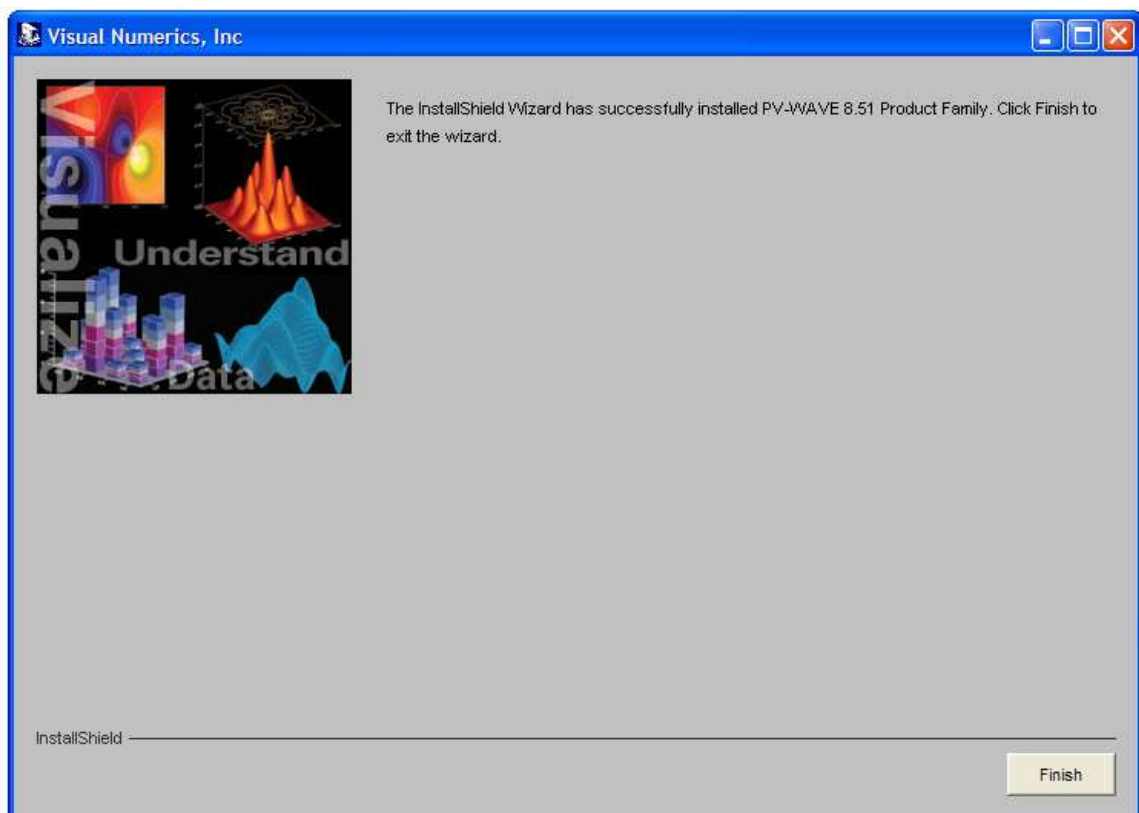
14. This screen tells you about the location of a file that you might need to read to get some information on how to set up your PDF reader to view PV-WAVE Manuals Online. Click on *Next>>*



15. This screen tells you that you need a valid license file to use your PV-WAVE Family product. For Ole Miss Students, to get the license file, contact the MCSR by sending an e-mail to [assist@mcsr.olemiss.edu](mailto:assist@mcsr.olemiss.edu) from your university issued e-mail account. Click On **Next>>**



16. This screen prompts you that the PV-WAVE has been successfully installed. Click on **Finish** to exit the Wizard.



17. To use the PV-WAVE family product, first you have to copy the *license.dat* file (the one that you can get from the MCSR) into the <VNI directory >\license directory
18. To start PV-WAVE, click on the *Start* button → *Programs* → *PV-WAVE 8.51 Product Family* → *PV-WAVE 8.51* → *PV-WAVE Home Window*
19. Now you can start using PV-WAVE

